



04737 Fuller Rd | East Jordan, MI 49727
231-536-3369 | info@miravenhill.org | MiRavenHill.org

Raven Hill Discovery Center, incorporated in 1991,
is a 501(c)(3) tax-exempt corporation.

Open year-round on weekends – noon to 4pm Saturdays and 2pm to 4pm Sundays.
Between Memorial Day and Labor Day, hours expand to include weekdays from
10am to 4pm. The Center is also open other times, including holidays, by appointment.

MISSION: to provide a place that enhances hands-on and lifelong
learning for all ages by connecting science, history and the arts.

WHERE SCIENCE HISTORY AND ART CONNECT

To: Raven Hill friends

From: Cheri

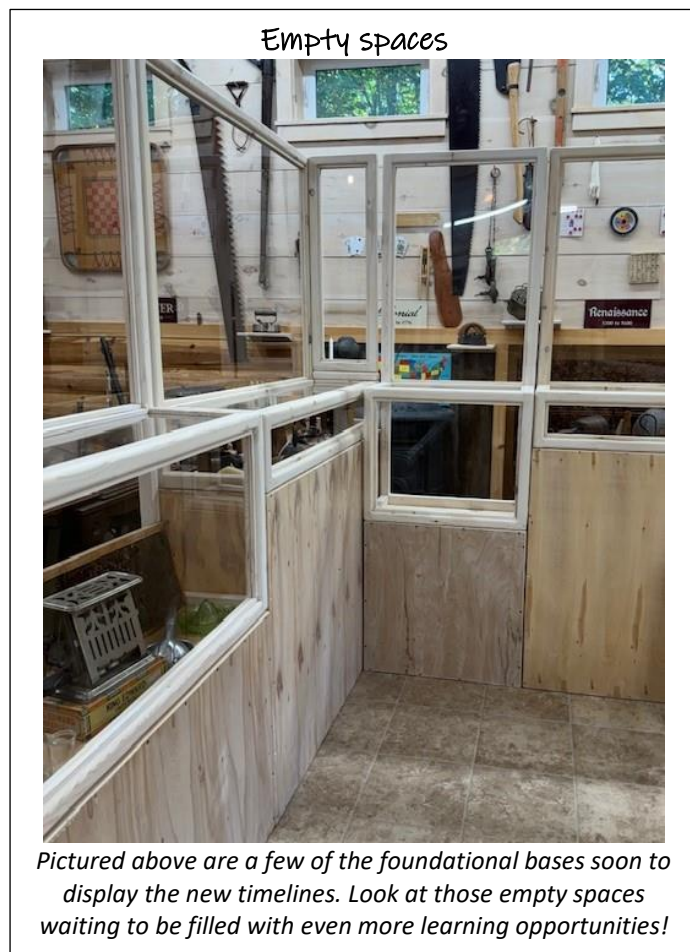
Date: October 5, 2024

Re: *Empty spaces transformed*

The Raven Hill Discovery Center's exhibition committee is finalizing the **Innovations Across the Ages (IAA)** Project, thanks to funding from the Alden & Vada Dow Family Foundations, VonVoigtlander Foundation, the Baiardi Family Foundation, Michigan Humanities, Great Lakes Energy People Fund and community members. Soon the new and improved Evolving Technology (ET) Building will open with three new timelines and be accessible to visitors for self-guided tours on a regular basis.

The **IAA Project** includes the installation of viewing panels and display cases housing smaller artifacts, while transforming the previously plain and unadorned bases that support those display cases into additional exhibit space. These "foundational" bases that serve to guide visitors along the walkway, will soon feature two new mini-timelines—the history of windows and of door hinges & latches. Those same supporting bases will also highlight a key innovation from each featured time period for both daily life and communications. This third timeline display is titled "*How We Got to Now*," and reveals the "foundational" underpinnings of major advancements from the Stone Age to the Information Age.

These foundational bases will become an excellent use of space, reflecting Raven Hill's philosophy that every surface holds a potential for learning. This approach defines Raven Hill Discovery Center as a *maximalist* museum, in contrast with minimalist styles. By weaving together science, history, and art, the Center offers a vibrant array of hands-on experiences and interactive exhibits across multiple disciplines. Its maximalist vision allows for diverse displays, both indoors and outdoors, encouraging visitors to engage their senses and creativity as they explore everything Raven Hill has to offer.



Maximalism at it best



Maximalism is everywhere at Raven Hill, especially in the hands-on Discovery Room, the Evolving Technology Building and everywhere in between! It encourages visitors to discover, explore and be curious.

Mini-maximalism



This display of sea creatures also includes a plant and a fossil, making it a mini-maximalist exhibit! Can you pick out the plant and the fossil?

Raven Hill's *maximalist* approach creates spaces where learning is multifaceted, offering visitors a rich and varied experience that continually inspires discovery and curiosity. The Center fosters connections with and between science, history and art. No matter what a visitor's interest, they will connect with something at Raven Hill. By continually enhancing the museum's environment, the Center designs immersive experiences that encourage visitors to learn, grow, and play. This "more is more" philosophy encourages variety, detail, and engagement in every nook and cranny at Raven Hill. Guests are encouraged to look up, down and all around wherever they find themselves at the Center! The Evolving Technology Building will be an additional example of maximalism with its new door, window and "How We Got to Now" timelines on the foundational bases there.

Fall hours are in effect. Raven Hill is open weekend hours—noon to 4pm on Saturdays; 2pm to 4pm on Sundays and all other times by appointment. Due to the bridge construction on Fuller Road, Raven Hill will operate out of the **Pop-up Museum** during September and October weekends, with outdoor exhibits open for visitors on the main campus. Visitors can make an appointment to visit the indoor exhibits and animals in the Main Museum at other times, including holidays. Call 231.536.3369 or email info@miravenhill.org to make reservations. **Weekend hours inside the Main Museum building will resume on Saturday, November 2, 2024.** At that time visitors will be able to access all of Raven Hill via the 3-mile detour until the Fuller Road bridge is completed and the road reopens. Visitors can then explore the Main Museum with its hands-on room, animals and **Under Michigan & Beyond** exhibition, as well as enjoy the Schoolhouse, Treehouse, ET Building and all the outdoor exhibits.

So, for right now, look for the **Pop-up Museum** in the Open Space on weekends. The two WHITE inflatable tents are located at the corner of C-48, Fuller and Pearsall Roads. Parking and the tents can be accessed from Pearsall Road. Please stop there, check in, pay your \$5 (half price) admission AND investigate the "exhibits" a while, before getting directions for the detour and driving around the "country block" to explore all the outdoor exhibits on the Main Campus, Connections Trail and in the Ancient World. As oceanographer Don Walsh said, "Exploration is curiosity put into action." There's certainly plenty to explore and be curious about here in this *maximalist* environment at Raven Hill. Plan to visit soon.

Cheri