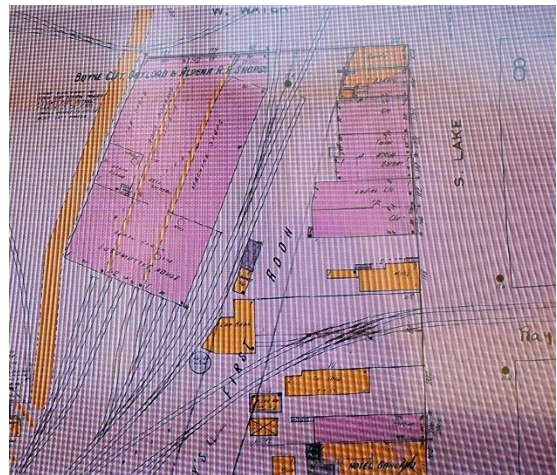
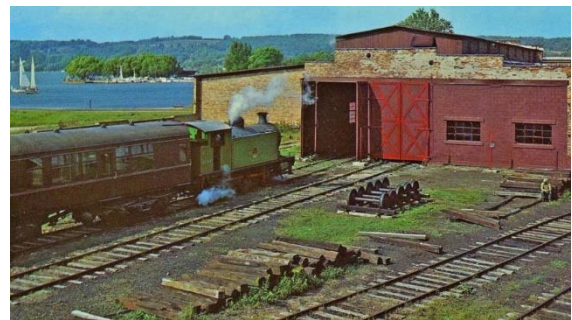


*Raven Hill Discovery Center is a 501(c)(3) tax-exempt corporation.*

**Mission:** Raven Hill provides a place that enhances hands-on and lifelong learning for all ages by connecting science, history & the arts.

## History Journal: Boyne City Gaylord & Alpena Railroad July 20, 2020

Before you read below, look closely at the pictures. What do you see? Read and see what you might have missed!



The Boyne City Railroad was a Class III railroad that operated in Northern Michigan under several names between 1893 and 1978. It was finally abandoned in 1982 after a career spanning 85 years from the beginning Michigan's lumber era into the next century. In 1905 the Boyne City & Southeastern was sold to the Boyne City, Gaylord and Alpena (BCG&A) Railroad. The BCG&A Railroad was incorporated with a capitalization of \$1,000,000.00. This was operated under the direction of William H. White, who owned 110 miles of track from the South Arm of Pine Lake (Lake Charlevoix), east to Boyne Falls, Alba, and then in an easterly direction to Atlanta, and Alpena, Michigan. There it connected to the Detroit & Mackinac Railway. A new depot was opened in Gaylord allowing both passenger and freight service. A new depot or freight building was built in Boyne, it was located alongside the tracks and is still there today between South Park Street and South Lake Street on Ray Street. —Eddie May