



04737 Fuller Road, East Jordan, MI 49727  
(231) 536-3369 | [www.miravenhill.org](http://www.miravenhill.org)  
[info@miravenhill.org](mailto:info@miravenhill.org)

*Raven Hill Discovery Center, incorporated in 1991, is a 501(c)(3) tax-exempt corporation.*

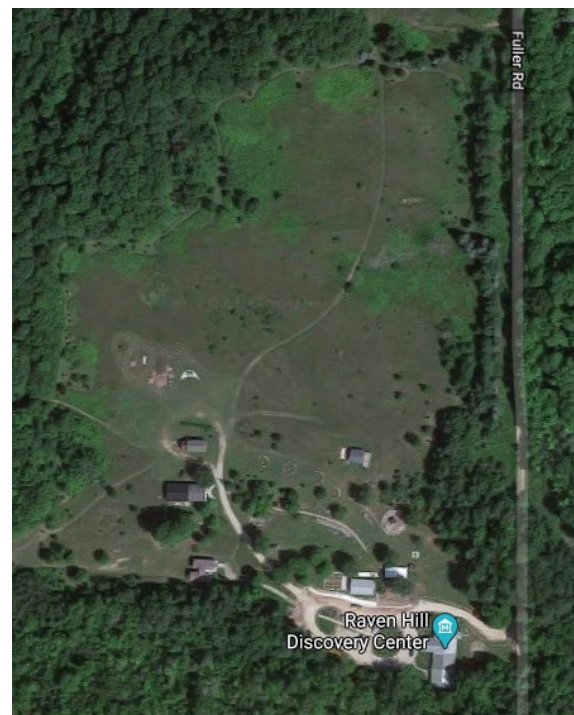
**Mission:** Raven Hill provides a place that enhances hands-on and lifelong learning for all ages by connecting science, history & the arts.

To: Friends and Family everywhere  
From: Cheri and Raven Hill  
Date: June 12, 2021  
Re: Weekly Update

Hello to Everyone!

I should be dizzy! It was a whirlwind week. On Sunday, one of my sisters helped space out the stations along the new **Connections Trail**. We used pink garden flags to mark the locations, so visitors can easily move from one station to the next. Using a list of the 40 stations, we tried to make sure that the various balance beams were spaced out and not right by each other. We placed the weather, solar and wind panels near the Alternative Energy House. After several “round” trips, we had a good idea of where everything would be located.

Tuesday morning, five commercial playground stations were delivered to Van Dam Custom Boats—the semi driver was reluctant to drive up the hill here at the Center. Tuesday afternoon, Kirby Snively delivered panels for six of the stations. On Wednesday, Bob Anderson personally delivered his Garden Kaleidoscope. Thursday, Kirby delivered the final six panels that he built.



*Google Earth 2021 gives you a drone's eye view of the world below and the location of Raven Hill's new Connections Trail which will parallel the Taxonomic (Taxi) Trail around this open field to the north of the Center's main campus.*



*Camp Director, Haley Kozek, flexes her muscles as she pretends to move this 500-pound crate of Connections stations! If you can come help uncrate and install, our second work bee is set for 10am on Saturday, June 19<sup>th</sup>. Call Cheri at 231.536.3369 or email [info@miravenhill.org](mailto:info@miravenhill.org) to let her know you are coming.*

Friday morning, Jean Van Dam planted the rotating dish garden in the interactive kaleidoscope. Raven Hill is delighted to join the ranks of those all over the United States and beyond, who display Anderson's metal sculptures. Chris Crego transported the two balance beams, crawl tube, drum line and telescope from Van Dam's to Raven Hill and the dinosaur panels were delivered to The Wood Shop in Boyne City to be framed. They will be installed at the Center overlooking the Jurassic Park walkway soon. As if that wasn't enough, Friday afternoon, I picked up the engraved stones for the sundial. They will replace the laminated paper numbers that we have used in the past. It will be a real upgrade—and a great “new” station on the Connections Trail.



By Friday afternoon, a family was already checking out the wonderful kaleidoscopic designs made by spinning the dish garden. Be sure you see it when you come next.



These engraved bluestones will be set flush in the ground outside the cement circle! That will make for easy mowing! Visitors can read the time by the sun's shadow in both Daylight Savings Time and Eastern Standard Time! The original sundial was created by Leadership Little Traverse in 2010.



You'll just have to wait to see this T-Rex and all his friends, when the Dino Height Station is done and ready for you to compare your height to "pre-teen" (half-size) dinosaurs!



Saturday, Kirby was back at the Center to install all twelve of his panels. It was a hot, sweaty and dirty job, but we got it down to a science and all twelve panels are now professionally installed. Each panel will have a specific focus, such as space, birds, simple machines or geology. John Clements is coming this week and will use two of the panels for solar and wind power displays. Then on Saturday, June 19<sup>th</sup> at 9:00am, Raven Hill could use help setting up the tipi behind the Schoolhouse and adjacent to the **Connections Trail**. After that, at



The Connections panels are up! Next step is giving them a colorful coating of paint and adding items to make them ready for hands-on learning.

10:00am, it's "all hands on deck" to mount the commercial pieces; paint panels; position the bricks around the sundial; move the garden loom and complete other tasks to ready the **Connections Trail** for its grand opening! Email [info@miravenhill.org](mailto:info@miravenhill.org) or call 231.536.3369, if you can help out. Hope to see you soon to volunteer or just to visit!

Cheri