

SPARK!

PLACES OF INNOVATION

The Smithsonian's *Spark! Places of Innovation* exhibit is coming to Michigan in 2023



About the Exhibit:

People in small towns are revitalizing old neighborhoods, rejuvenating historic districts, establishing local industries, creating new festivals and cultural attractions, and much more. They are discovering hidden potential in their places—often in local or regional history, sometimes in contemporary change such as new industry or demographic shifts, and always in the hearts of their people—and generating ideas that bring that potential to life. These small towns have big ideas for creating a better today and a more hopeful tomorrow. *Spark! Places of Innovation* features stories from over 30 rural communities across the nation that reveal the dynamic relationship between place and creativity. For every community, there is a unique combination of history, resources, leadership, collaboration, and opportunity that resulted in invention and innovation—socially, artistically, technologically, or culturally.

Spark! will be the springboard for diverse local programming in the humanities, sciences, and arts. Visitors will be inspired to learn about how innovation has shaped their own communities and how they may be innovators themselves. This exhibition will be an opportunity for community members to come together in conversation around their community's history, present, and future with innovation.

Visit SPARK! Near You:

Alpena Country George N. Fletcher Public Library — May 20 to July 1, 2023

Three Rivers Public Library — July 8 to August 19, 2023

Raven Hill Discover Center — August 26 to October 7, 2023

Benzonia Public Library — October 14 to November 25, 2023

Capac Library, St. Clair County Library System — December 2, 2023 to January 13, 2024

Loutit District Library — January 20 to March 2, 2024



Photo by Mehrdad Zarifkar, 2017

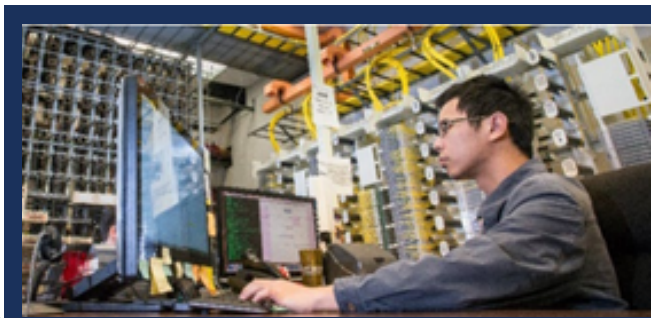


Photo by USDA



Questions?

Contact Ashley Ross, Director of Programs

517-372-7770 aross@mihumanities.org