



04737 Fuller Road, East Jordan, MI 49727
(231) 536-3369 | <http://www.MiRavenHill.org>
info@miravenhill.org

We are currently open noon to 4pm Saturdays, 2pm to 4pm Sundays. | Open holidays & other times by appointment.
Raven Hill Discovery Center, incorporated in 1991, is a 501(c)(3) tax-exempt corporation.

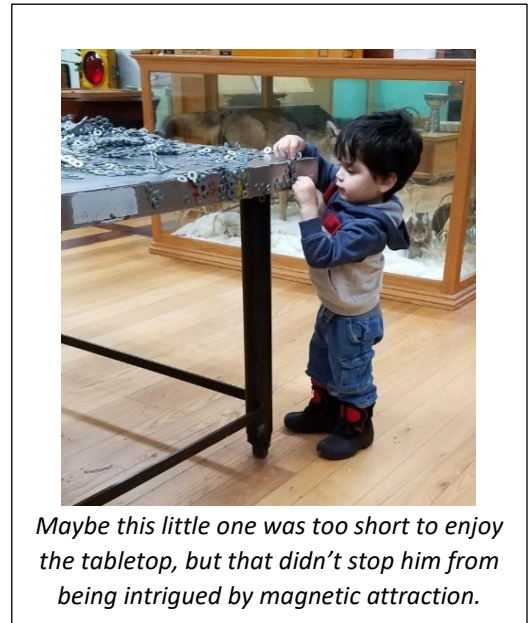
Mission: Raven Hill provides a place that enhances hands-on and lifelong learning for all ages by connecting science, history & the arts.

To: Friends and Family everywhere
From: Cheri and Raven Hill
Date: December 3, 2022
Re: *magnetic attraction*

From the very beginning, the magnet table has fascinated visitors of all ages. This special table was one of the first interactive exhibits moved into Raven Hill—on a forklift, with a tractor, through what was then a garage door. In the beginning, one idea for the Center was that local business and industry might donate exhibits. When I approached Mike Stowe at Industrial Magnetics about creating something, he said, “What do you want?” I replied, “I want something that will entertain a lot of people and never break.” That is exactly what we got! The magnet table remains just as popular today as it was the day we opened the doors at Raven Hill!

As we check visitors in at the front desk, we remind people that they need to keep their cell phones and credit cards, plus any electronic devices, like pacemakers, hearing aids and insulin pumps an arm’s-length away from the table, so that the magnetic field does not affect those objects. This warning does not dampen visitor interaction with this very unique table.

Inside the magnet table, there are bricks of magnets arranged in a pattern, allowing visitors to create towers, arches and sculptures with 50 pounds of steel washers that attract to the table. The magnetic field pulls from the center of the table to all four sides, making tower building a real challenge!



Maybe this little one was too short to enjoy the tabletop, but that didn't stop him from being intrigued by magnetic attraction.

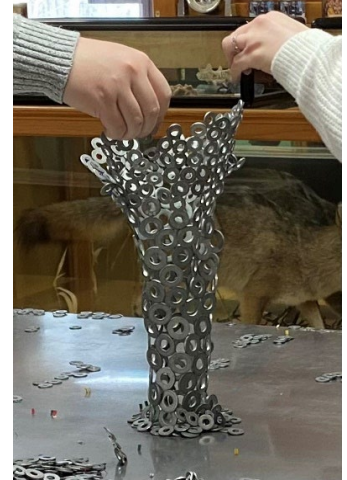


Here's a thumbs-up to success at the magnet table!

Early on, we realized that the magnet table was a great team builder for families and groups of children. Working together, visitors can use the washers to build a tower up to a line on the sign hanging above the table. The line says “tower height”. Once that height is reached, the tower is timed for 30 seconds. Everyone who helps build a successful tower gets a small prize. We also quickly learned that we had to limit the number of tower prizes to three, so that visitors would not spend **all** of their time at the magnet table, but take time to enjoy other exhibits at the Center as well!



It's all about teamwork at the magnet table—what a great way to spend the last few minutes of summer camp, while waiting for parent pickup!



Using the steel washers on the magnet table, towers, arches and sculptures are all possible! Next time you visit Raven Hill, maybe you can use your imagination to build something new and different with the washers?

Take care and stay in touch. Be sure to plan a visit to Raven Hill soon to explore with friends, celebrate a birthday or take an art class! Over the approaching holidays, we will be closed on Christmas and New Year's Days and open Christmas Eve and New Year's Eve by appointment. Otherwise, we are open our regular weekend hours—noon to 4pm on Saturday and 2pm to 4pm on Sunday—as well as open holidays and other times by making reservations. Call 231.536.3369 or email info@miravenhill.org for more information or to book your own special time at Raven Hill.

Have a good week,

Cheri